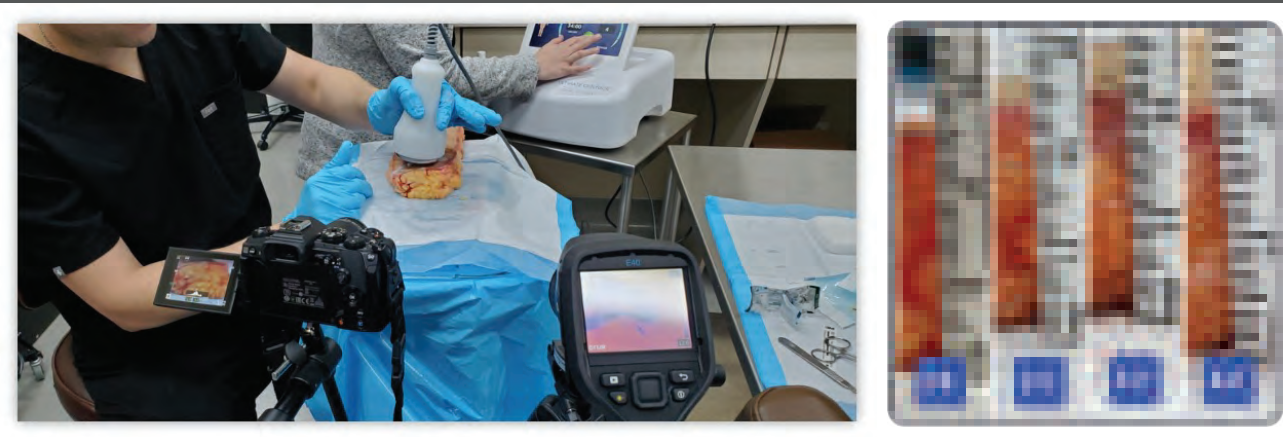


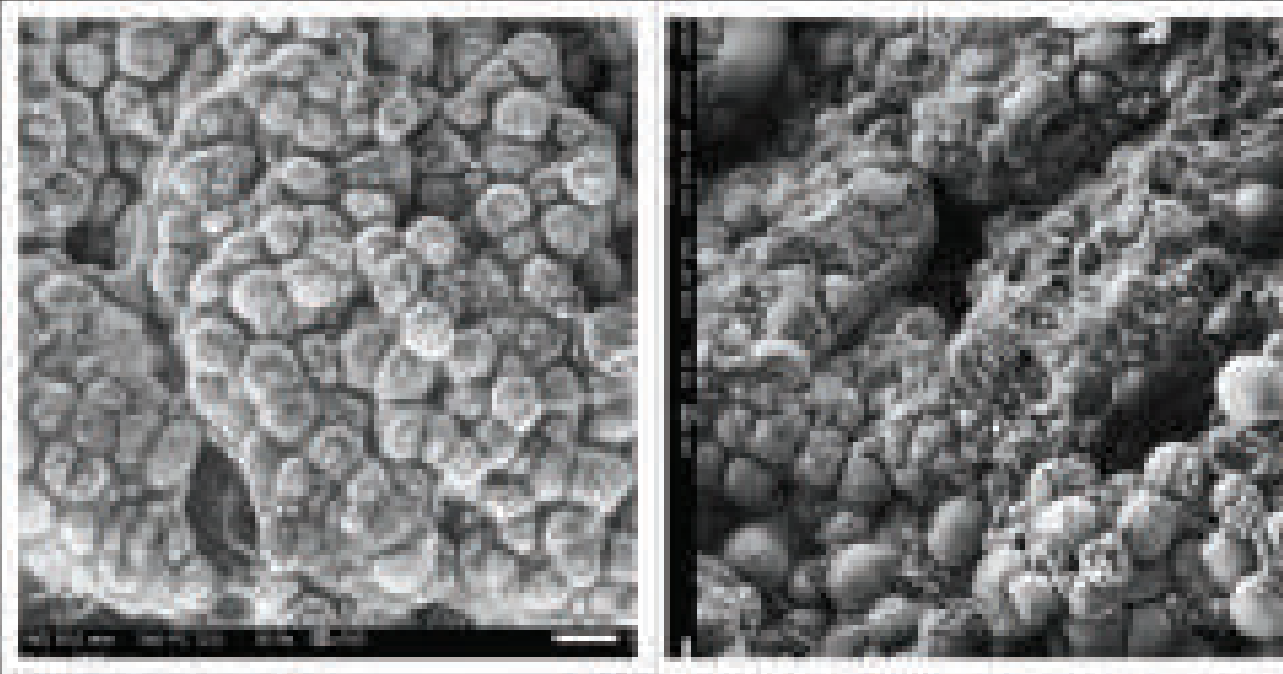
ULTIMATE CONTOUR

Two Technologies - One Amazing Result



REAL RESULTS BACKED BY REAL WORLD TESTING.

Using Flir Thermal on an abdominal specimen, you can see the level of fat cell destruction resulting from one Ultimate Contour treatment. The tape measures shows the size reduction after 5, 10 and 15 minutes. Over the course of just 15 minutes, there is a 24% reduction.



CONTROL (PRE-TREATMENT)

AFTER 15 MINUTES



VISIT US AT BOOTH NUMBER _____

GET IN TOUCH

Dr. John Meadors

- 801-369-9448
- drmeadors@ultimatecontour.com
- ultimatecontourtraining.com

FORGET WHAT YOU KNOW ABOUT BODY CONTOURING. THIS CHANGES EVERYTHING.

SEEING IS BELIEVING REAL RESULTS, EVERY TREATMENT.

Ultimate Contour is the only low frequency ultrasound device cleared by the FDA that provides painless, immediate results. Common uses include circumference reduction of the abdomen, cellulite reduction, as well as skin tightening and toning. Ultimate Contour has a second hand piece which uses Radio Frequency (RF) to treat cellulite and smooth and tone skin. Both modalities complement each other to achieve amazing results.

PATIENT BENEFITS

REAL RESULTS, FAST.

Fast results. Patients can lose one inch on their first visit - and more with time and additional treatments

Fast treatments. Typically 10-40 minutes

Safe, non-invasive, pain-free and effective experience

Body contouring options for fat, cellulite and skin tightening, customized to each patient

PRACTICE BENEFITS

RESULTS. REVENUE. ROI.

Real results, fast. Ability to customize treatments and even couple with other body contouring devices in your practice

Retention and Referrals. Happy patients return for more and refer new patients

Fast revenue. Two separate but synergistic treatment revenue streams

Fast ROI. Greater control over treatment costs means more control over revenue drivers and a fast return on investment

Flexible profit per patient and per room

- No consumable cost
- Treat larger areas in less time
- Class II, easy to use medical device
- Designed to be portable

